

Session Name: 20-01-2020 13-47 (1)

Date Created: 20/01/2020 13:01:55

Active Participants: 71 of 71

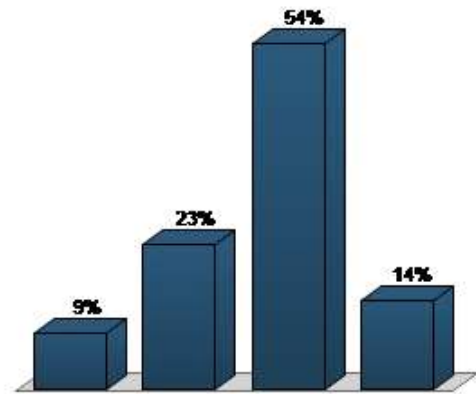
Average Score: 50.35%

Questions: 6

Results by Question

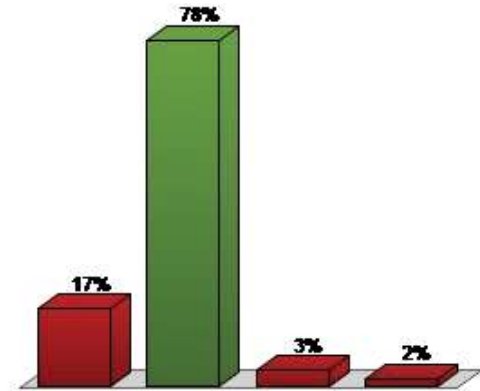
1. Note, you do not have enter login details even though it asks – just hit submit. What don't I like in chocolate? (Multiple Choice)

Responses		
	Percent	Count
orange	8.77%	5
mint	22.81%	13
raisins	54.39%	31
any of that crap	14.04%	8
Totals	100%	57



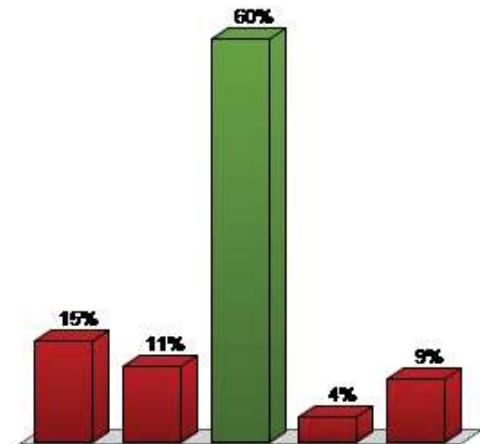
2. Recap: If the probability of our result or one as extreme or more extreme is ≤ 0.05 ... (Multiple Choice)

Responses		
	Percent	Count
we DO NOT REJECT our H0	17.24%	10
we REJECT our H0 (c)	77.59%	45
Our test is not significant	3.45%	2
No idea	1.72%	1
Totals	100%	58



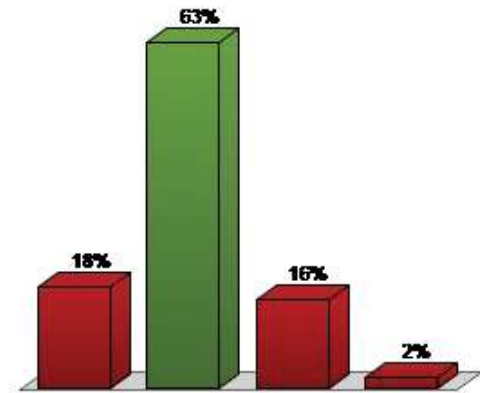
3. From the Indep. study: What kind of variable would you use a factor for in R? (Multiple Choice)

Responses		
	Percent	Count
Counts	15.09%	8
Continuous	11.32%	6
Categorical (c)	60.38%	32
None of A, B or C	3.77%	2
Really no idea	9.43%	5
Totals	100%	53



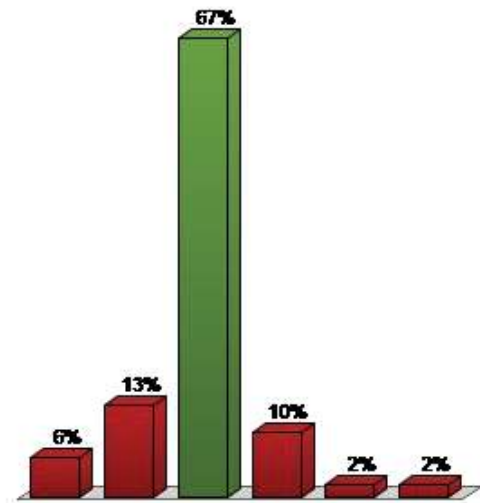
4. Suppose there is no difference in height between York and Leeds students. We take a sample of 10 students from each university to use in a statistical test. Our p-value works out as 0.02. We have..... (Multiple Choice)

Responses		
	Percent	Count
not made an error	18.37%	9
made a type 1 error (c)	63.27%	31
made a type 2 error	16.33%	8
Really no idea	2.04%	1
Totals	100%	49



5. The concentration of an enzyme was statistically compared in 6 samples of liver tissue and 6 samples of kidney tissue. The p-value was 0.09. Which is true? (Multiple Choice)

Responses		
	Percent	Count
Kidney and liver tissue differ	5.77%	3
Kidney and liver tissue differ or we made a type 2 error	13.46%	7
Kidney and liver tissue do not differ or we made a type 2 error (c)	67.31%	35
Kidney and liver tissue do not differ or we made a type 1 error	9.62%	5
Kidney and liver tissue do not differ	1.92%	1
Eh?	1.92%	1
Totals	100%	52



6. You expect to meet the first two learning objectives..... (Multiple Choice)

Responses		
	Percent	Count
completely	17.78%	8
mainly	66.67%	30
partially	11.11%	5
only a little	0%	0
not at all	4.44%	2
Totals	100%	45

